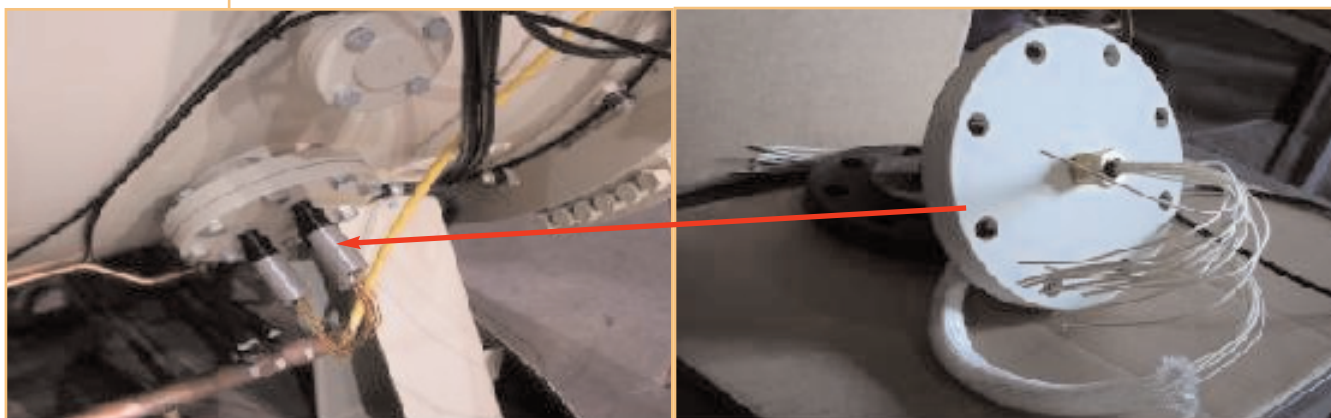




SPK-5

New Thermocouple Feed-Thru Conversion Kit For VFS Models



Shown on the left is a discontinued three-unit 4 pair Type K thermocouple feed-thru. New single-unit 12 pair Type K thermocouple feed-thru is on the right for VFS models.

It's time to upgrade your furnace from the discontinued three-unit 4 pair Type K thermocouple feed-thru to the new single-unit 12 pair Type K thermocouple feed-thru with new mounting plate and o-ring for VFS furnace models.

WHEN NEEDED:

Thermocouple feed-thru was discontinued and this conversion is widely needed on all VFS models built prior to 2004.

COMPONENTS & PRICE:

The Thermocouple Feed-Thru Conversion Kit includes:

- 1 Thermocouple mounting plate
- 1 O-ring for thermocouple mounting plate
- 1 O-ring vacuum grease
- 1 12 pair Type K thermocouple feed thru
- 7 ft. Ceramic tubing to help protect wiring in furnace chamber
- Pipe sealant
- 12 Type K male thermocouple connectors
- 12 Type K female thermocouple connectors

Contact an Ipsen representative for pricing.

See back page for installation instructions.

INSTALLATION:

1. Disconnect and remove the thermocouple wires from the 3E Labs feed-thru and the thermocouple jack panel.
2. Remove the 3E Labs feed-thru mounting plate and clean the mounting flange on the furnace with a solvent commonly used for vacuum system parts (acetone).
3. Clean the new thermocouple mounting plate with a solvent commonly used for vacuum system parts (acetone).
4. Install the new Type K thermocouple feed-thru using a small amount of anaerobic pipe thread sealant (VFS part # 257508005). Do not use Teflon tape.
5. Install the ceramic fiber sleeve/tubing (VFS part # 300006100) over the wires at the end of the Type K thermocouple feed-thru that will be connected to the thermocouple jack panel (longer end).
6. Clean the O-rings by simply wiping with a lint free, disposable industrial wiping cloth. Do not use acetone, alcohol, or any other liquid to clean the O-ring.
7. Apply a very light film of vacuum grease (VFS part # 257508003) to the O-ring and install the assembled thermocouple mounting plate.
8. Connect the Type K thermocouple feed-thru wires to the thermocouple jack panel.
Note: Be sure to observe correct polarity when connecting thermocouples/extension wires, Type K polarity is Yellow (+) (nonmagnetic wire) & Red (-) (magnetic wire).
9. Connect the male (VFS # 300007074) and female (VFS part # 300011346) thermocouple plugs.

